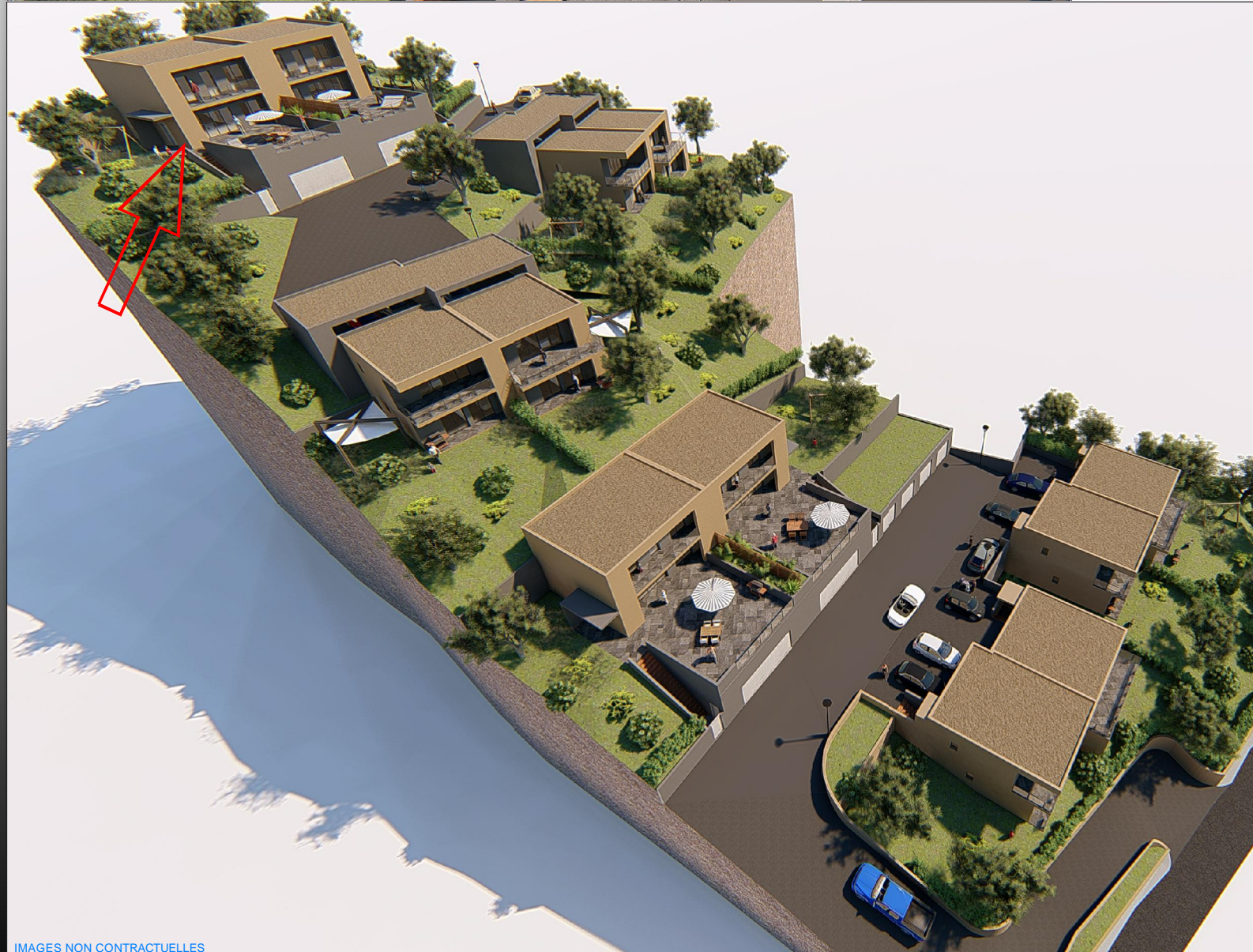


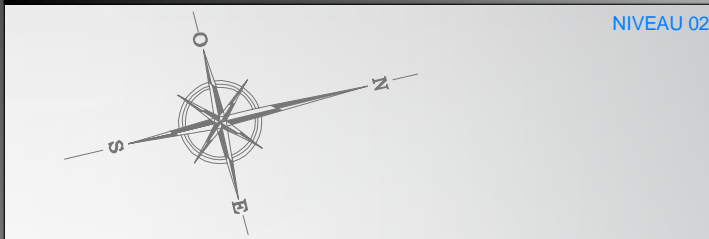
RESIDENCE ELENA

COMMUNE DE BASTIA

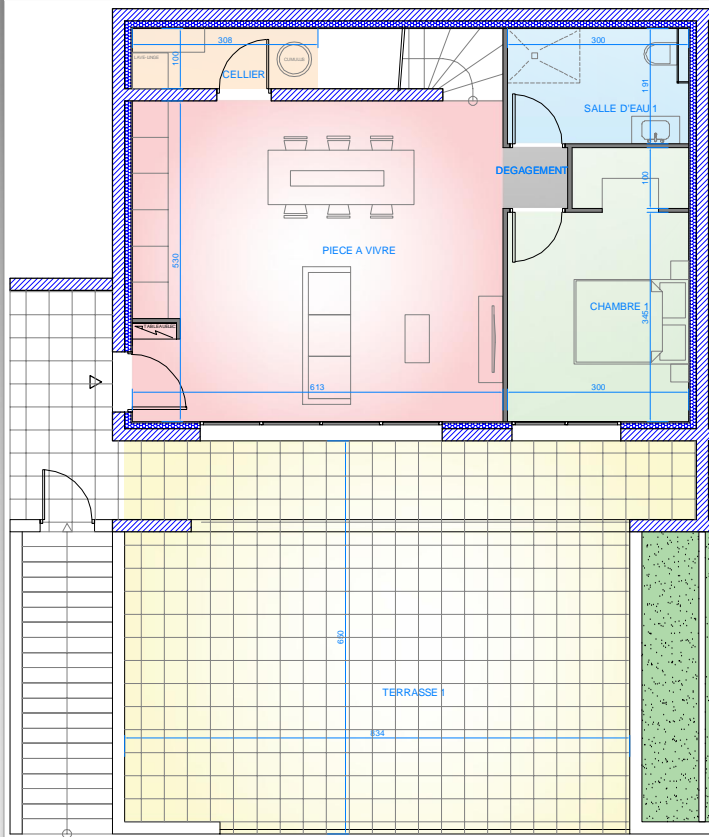
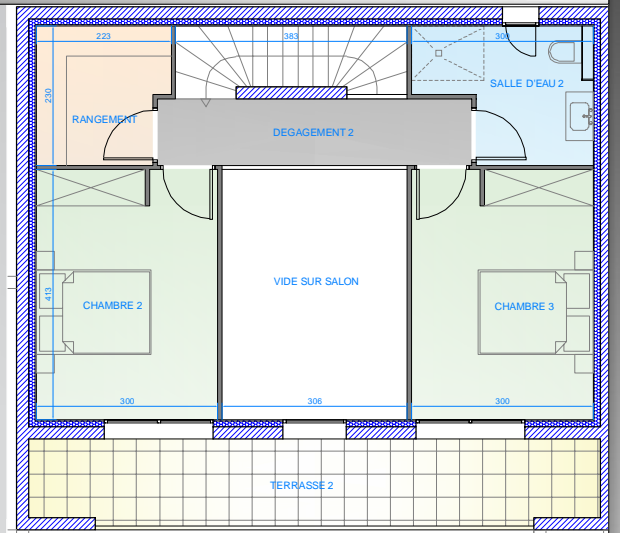
BATIMENT 6 - APPARTEMENT 1 - LOT 15 - TYPE 4



PLAN DE LOCALISATION



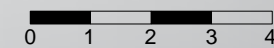
NIVEAU 02



NIVEAU 01

TABLEAU DES SURFACES
LOT 15 - T4

PIECE A VIVRE	32.52m ²
CELLIER	3.07m ²
SALLE D'EAU 1	5.71m ²
CHAMBRE 1	12.43m ²
DEGAGEMENT 1	1.07m ²
CHAMBRE 2	12.35m ²
CHAMBRE 3	12.35m ²
RANGEMENT	4.78m ²
SALLE D'EAU 2	5.65m ²
DEGAGEMENT 2	5.72m ²
TOTAL	95.65m ²
TERRASSE 1	55.10m ²
TERRASSE 2	13.72m ²
GARAGE	58.93m ²
JARDIN PRIVATIF	environ 300m ²



NIVEAU 00

