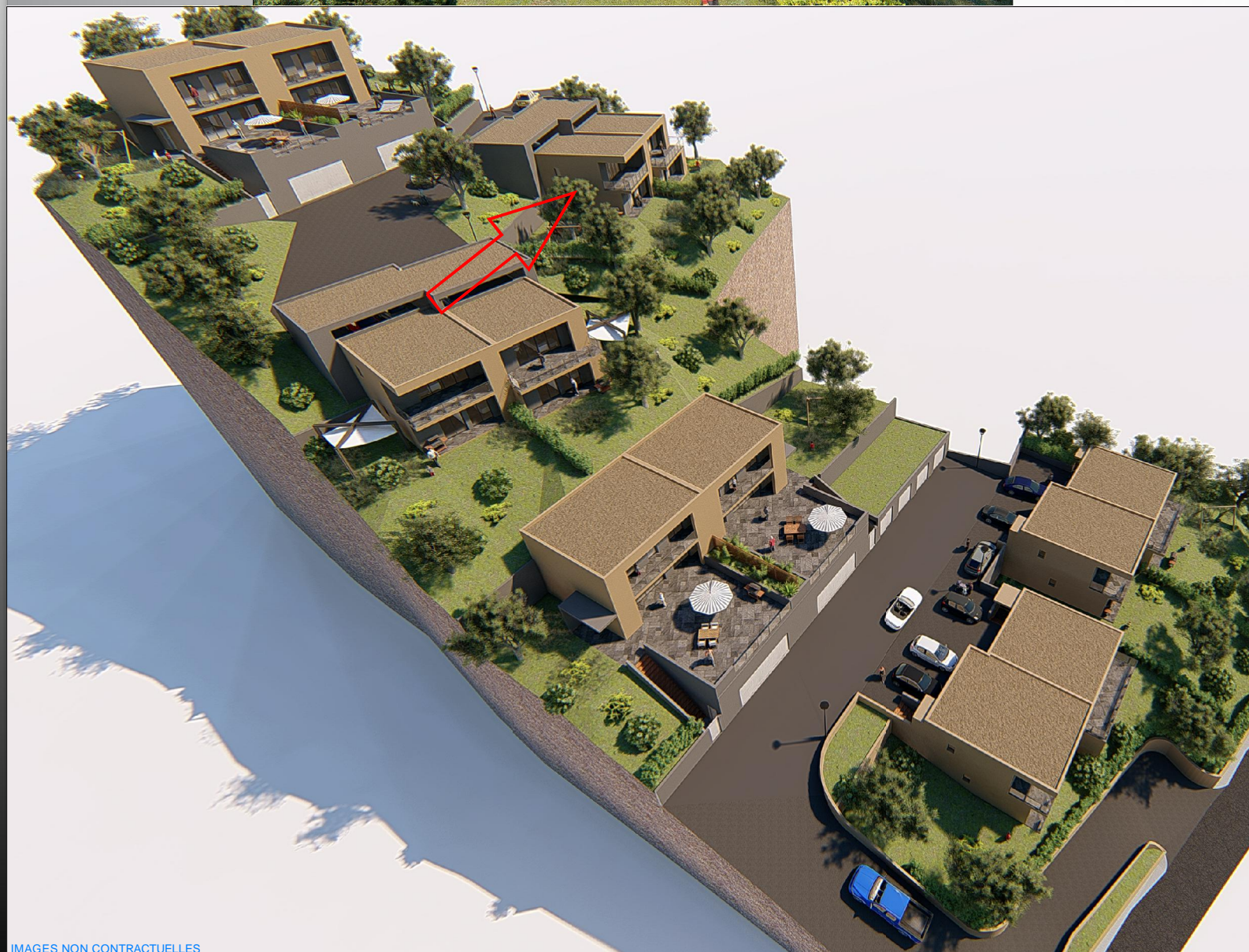


RESIDENCE ELENA

COMMUNE DE BASTIA

BATIMENT 5 - APPARTEMENT 1 - LOT 13 - TYPE 3



IMAGES NON CONTRACTUELLES

PLAN DE LOCALISATION



NIVEAU 00

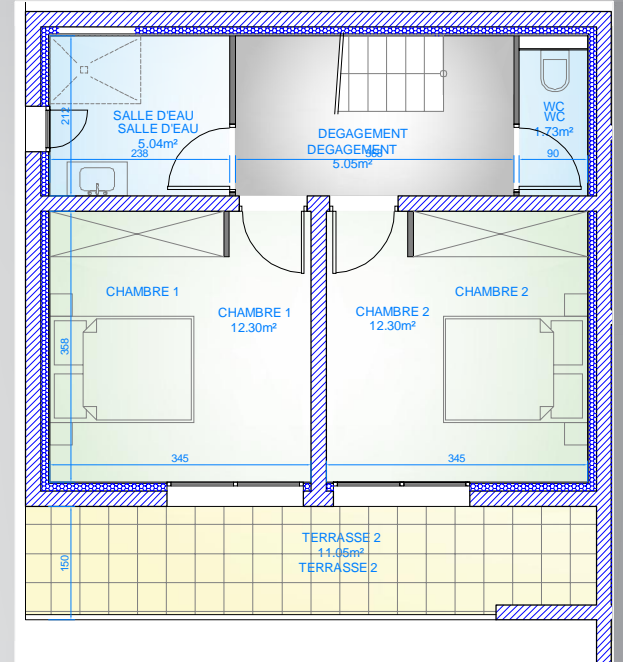
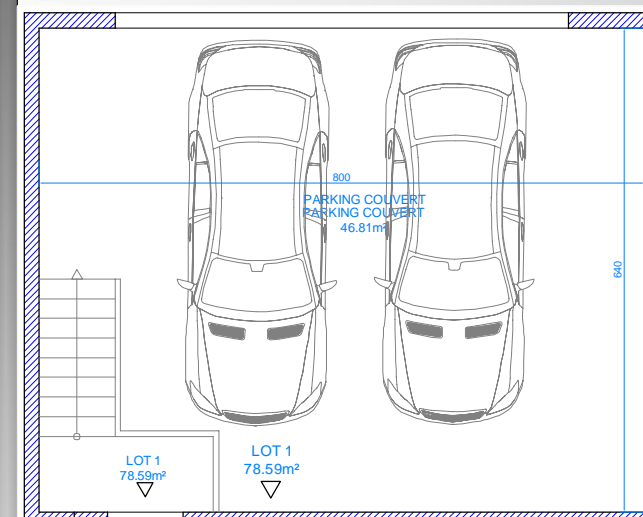
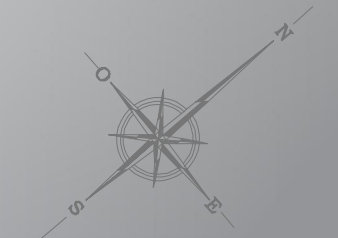


TABLEAU DES SURFACES
LOT 13 - T3

PIECE A VIVRE	38.35m ²
CELLIER	3.53m ²
SALLE D'EAU	5.04m ²
WC	1.73m ²
DEGAGEMENT	5.05m ²
CHAMBRE 1	12.30m ²
CHAMBRE 2	12.30m ²
TOTAL	78.30m ²
TERRASSE 1	24.62m ²
TERRASSE 2	11.05m ²
PARKING COUVERT	46.81m ²
JARDIN PRIVATIF	environ 320m ²

0 1 2 3 4



NIVEAU 01

